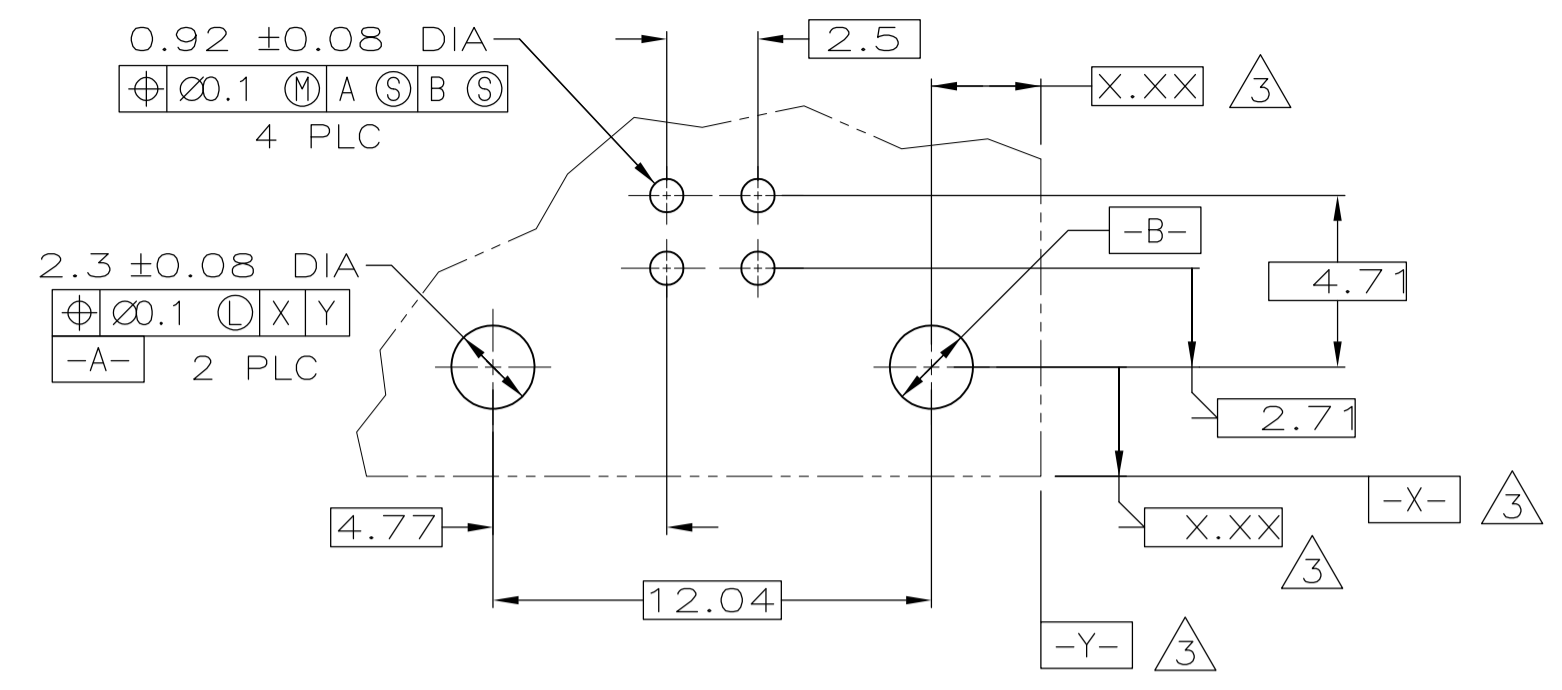
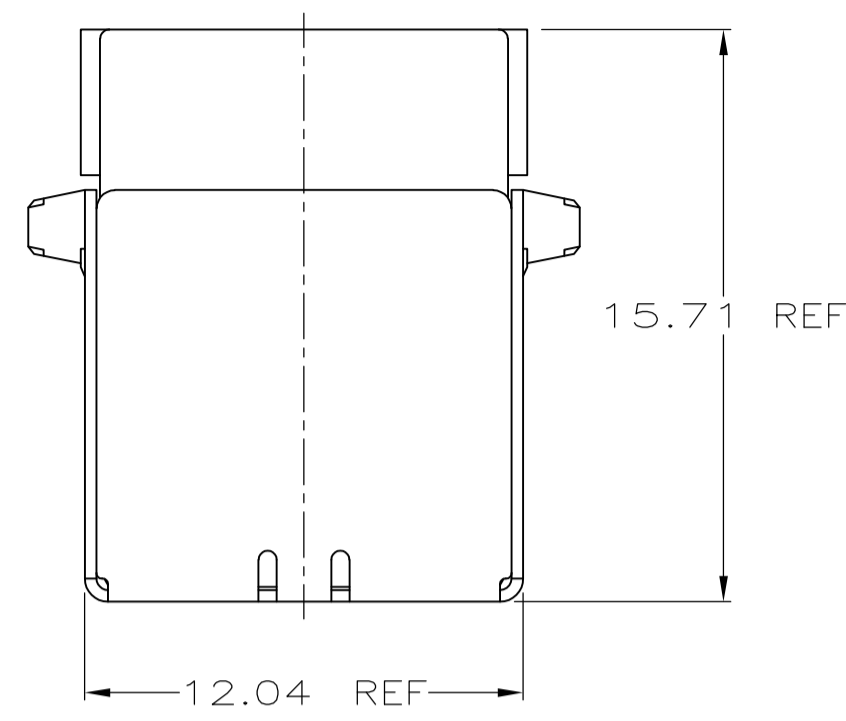
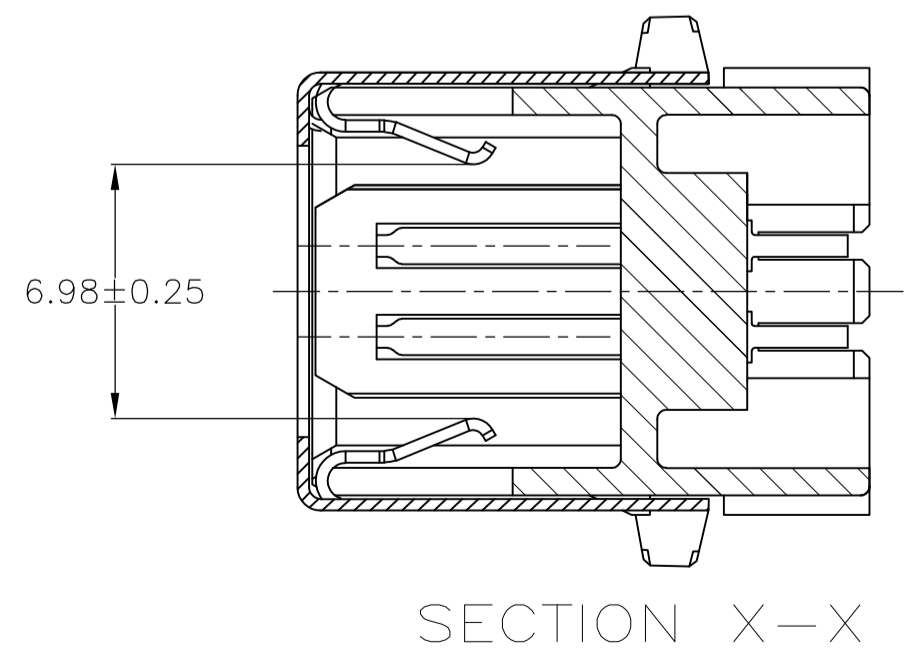
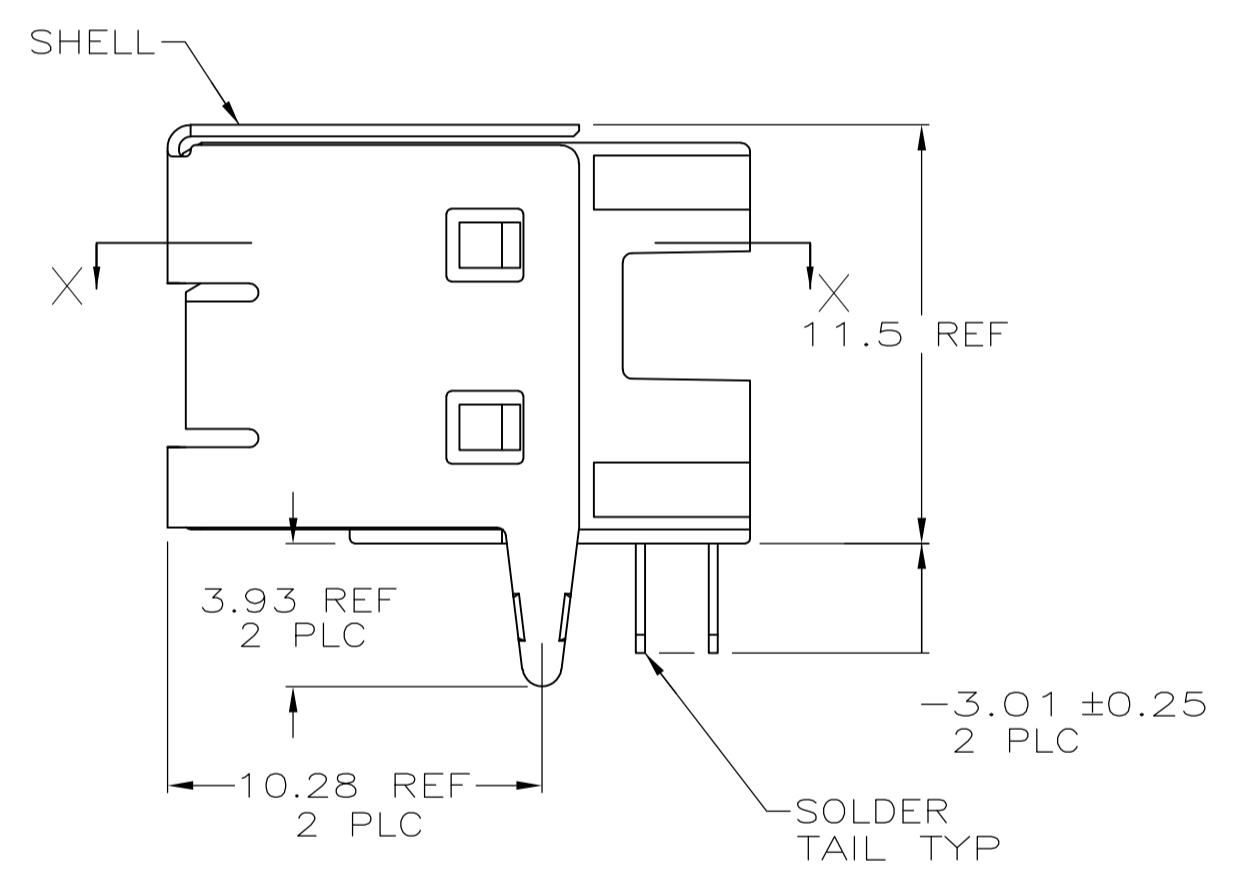
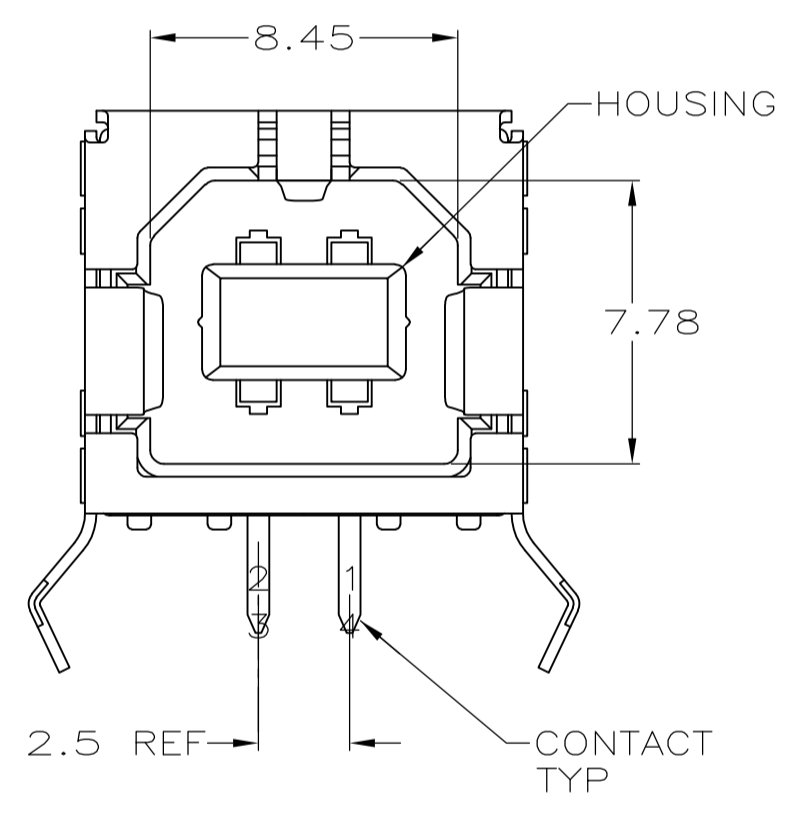


LOC	DIST	REVISIONS			
P	LTR	DESCRIPTION	DATE	DWN	APVD
J	00	H	REVISED ECR-08-008701	07APR08	A.Z. S.Y



PC BOARD MOUNTING DIMENSIONS $\triangle 4$



- $\triangle 1$ MATERIAL:
 SHELL & CONTACTS: COPPER ALLOY.
 HOUSING: UL 94V-0 RATED, THERMOPLASTIC, BLACK.
- $\triangle 2$ PLATING:
 CONTACTS: 0.076 μ m MINIMUM GOLD OVER 0.76 μ m MINIMUM PALLADIUM-NICKEL ON MATING AREA.
 3.8 μ m MINIMUM TIN-LEAD ON SOLDER TAILS.
 BOTH OVER 1.27 μ m MINIMUM NICKEL.
 CONTACT ALTERNATE PLATING: 0.76 μ m MIN GOLD ON MATING AREA, 3.8 μ m MIN TIN-LEAD ON SOLDER TAILS, BOTH OVER 1.27 μ m MIN NICKEL.
 SHELL: 5.1 μ m MINIMUM TIN.
- $\triangle 3$ DATUM AND BASIC DIMENSIONS ESTABLISHED BY CUSTOMER.
- $\triangle 4$ RECOMMENDED PC BOARD THICKNESS OF 1.57.
- $\triangle 5$ PLATING:
 CONTACTS: 0.76 μ m MINIMUM GOLD ON MATING AREA, 3.8 μ m MINIMUM TIN-LEAD ON SOLDER TAILS, BOTH OVER 1.27 μ m MINIMUM NICKEL.
 SHELL: 5.1 μ m MINIMUM TIN.
- $\triangle 6$ PLATING:
 CONTACTS: 0.38 μ m MINIMUM GOLD ON MATING AREA, 3.8 μ m MINIMUM TIN-LEAD ON SOLDER TAILS, BOTH OVER 1.27 μ m MINIMUM NICKEL.
 SHELL: 5.1 μ m MINIMUM TIN.
- 7 RECOMMEND:
 MATING FORCE: 35N MAX.
 UNMATING FORCE: 13N MIN.
 RECOMMENDED MATING PLUG SHOULD MEET USB2.0 STANDARD.

OBSOLETE	$\triangle 6$	NO	BLACK	787780-5
	$\triangle 5$	NO	BLACK	787780-4
	$\triangle 2$	YES	BLACK	787780-3
	$\triangle 2$	YES	NATURAL	787780-2
	$\triangle 2$	NO	BLACK	787780-1
PLATING		HIGH TEMPERATURE COMPATIBLE	HOUSING COLOR	PART NUMBER

<small>THIS DRAWING IS A CONTROLLED DOCUMENT FOR AMP INCORPORATED. IT IS SUBJECT TO CHANGE AND THE CONTROLLING ENGINEERING ORGANIZATION SHOULD BE CONTACTED FOR THE LATEST REVISION.</small>		DWN	M.E. SHIRK	30 AUG 95	AMP Incorporated Harrisburg, PA 17105-3608
DIMENSIONS:		CHK	WAYNE DAVIS	31 AUG 95	
TOLERANCES UNLESS OTHERWISE SPECIFIED:		APVD	R. WALTER	18 JUN 96	
0 PLC ± 1 PLC ± 2 PLC ±0.1 3 PLC ± 4 PLC ± ANGLES ± FINISH ±		NAME	RECEPTACLE ASSEMBLY, RIGHT ANGLE, 4 POSITION, THRU-HOLE, TYPE B, UNIVERSAL SERIAL BUS		
MATERIAL	$\triangle 1$	WEIGHT	-	SIZE	A2
CUSTOMER DRAWING		CAGE CODE	00779	DRAWING NO	C=787780
		SCALE	5:1	SHEET	1 OF 1
		REV	H		